

R.P.O. UPDATE ONE - 5/1/2017

This is an update to *The United States Railway Post Office Postmark Catalog 1864-1977* by Charles L. Towle and Fred MacDonald, illustrates and briefly describes Florida markings applied on trains and steamboats, and at some terminal points by clerks that were post office employees. Only those markings containing the words "Railway Post Office", the abbreviation "R.P.O.", or known to have been officially used by the railway post office is listed. In most cases the designation is in the circular portion of postmark, but in some cases, it can be found in the RPO clerk handstamp cancel.¹

If the listing is preceded by an * (asterisk), it means this postmark has not been found and therefore no tracing is in the society's files. In this update, three listing have been found.

If you have a listed or unlisted Florida Route or Station Agent cover or a Transfer Clerk cover, and would like to participate in this listing and census, please send 300dpi scan to RR-FL-Marks@FPHSonline.com. You will be credited in the next updated version.

All the images in this update are from the R.P.O. collection of Deane R. Briggs, M.D.

UPDATE TO FLORIDA RAILROAD POST OFFICES

ALPHABETICAL LIST

<u>Railroad</u>	<u>Page</u>
Astor & Leesburg RPO	7
Atlanta & Palatka RPO	5
Augusta & Madison RPO	9
Bartow & Punta Gorda RPO	8
Charleston & Jacksonville RPO	8

<u>Railroad</u>	<u>Page</u>
Charlotte & Jacksonville RPO	9
Columbia & Jacksonville RPO	9
Cuthbert & Carrabelle RPO	9
Du Pont & Gainesville RPO	14
Du Pont & Port Tampa RPO	10
Fayetteville & Jacksonville RPO	10
Fernandina & Orlando RPO	3
Fernandina & Tampa RPO	10
Fort Pierce & Key West RPO	11
Hamlet & Jacksonville RPO	18
High Springs & St. Petersburg RPO	13
Jacksonville & Cedar Keys RPO	14
Jacksonville & Eau Gallie RPO	16
Jacksonville & Fort Pierce RPO	6
Jacksonville & Key West RPO	16
Jacksonville & Miami RPO	17
Jacksonville & Montgomery RPO	14
Jacksonville, Ocala & Tampa RPO	6
Jacksonville & Pensacola RPO	14, 15
Jacksonville & Port Tampa RPO	15
Jacksonville & St. Petersburg RPO	18
Jacksonville & Tampa RPO	15
Jacksonville Transfer Clerk RPO	16
Key West & Havana Cuba RPO	18
*Lakeland & Fort Meade RPO	3
Lakeland & Fort Myers RPO	18
Lakeland & Punta Gorda RPO	16
*Lakeland Transfer Clerk	18
Lakeland & West Fort Meade RPO	3
Macon & Palatka RPO	5
Miami & Key West RPO	12
Montgomery & Graceville RPO	18
New Smyrna & Lake Harbor RPO	18
Palatka & Brooksville RPO	4
Palatka & Drayton Island RPO	4
Palatka & Rochelle RPO	4
Sanford & St. Petersburg RPO	13
*Sanford & Tampa RPO	12
Sanford & Trilby RPO	11
Selma & Pensacola RPO	13
Waldo & Cedar Keys RPO	11
Waycross & Lakeland RPO	12
Waycross & Port Tampa RPO	12
Wilmington & Jacksonville RPO	7

Update One - Florida Railroad RPO Listing

This update will not show images or tracings of RPOs where a new date or Killer cancellation is discovered. Rather, it will show a change in the listing or new listing.

Below are the types of Killer cancellations found with RPOs.

RAILWAY MAIL POSTMARKS AND KILLER TYPES



Figure 1
Privately produced Duplex with fancy killer.



Figure 2
DUPLEX (1882-1897). Attached cork or rubber killer.



Figure 3
"Keywinder Type" 9 bars in Oval Killer 1898.

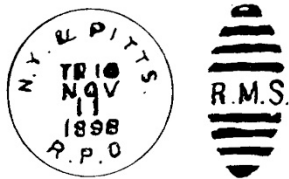


Figure 4
"Keywinder Type" 8 bar Oval; 1898-1901. Small initials RMS with periods.



Figure 5
"Keywinder Type" 6 bar Oval 1900. Larger initials, no periods.



Figure 6
"Keywinder Type" 6 bar Oval, 28.5 -29.5 mm. Letters in Circle smaller.

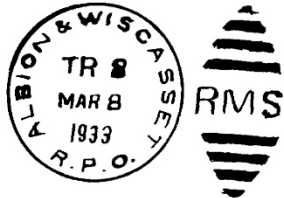


Figure 7
"Keywinder Type" 6 bar Oval. Longer Oval-30.5 mm.



Figure 8
"Flange Type" 8 bar pointed Oval, 1932-1936. RMS 14 mm wide.



Figure 9
"Flange Type" 8 bar pointed Oval, 1933-1937. RMS 11.5 mm.



Figure 10
"Flange Type" 8 thin bar Oval, 1937-1949. RMS 8.5 mm. wide.



Figure 11
"Flange Type" 8 thin bar Oval. PTS initials 1950-1960-1970. No initials.



Figure 12
"Flange Type" 11 bar Oval



Figure 14
Circle Date Stamp (Rubber) Temporary use awaiting steel. 1/7/61-1/8/62



Figure 13
4 Bar Rubber Stamp. Used 1926-1942 Pitts. & Chi. RPO



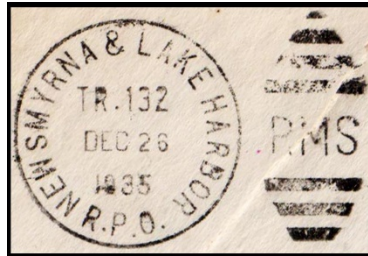
Figure 15
"Fast Mail Types" Duplex Type, Cork Killer.



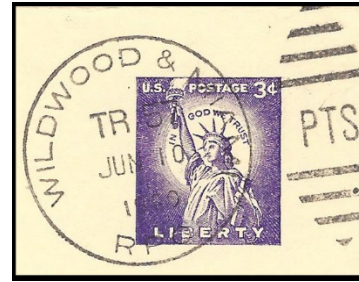
Examples of Florida Railroad RPO Killers



Keywinder Type - Fig. 6



Flange Type - Fig. 9



Flange Type - 1960 PTS (Fig 11)

Use the chart on the previous page to determine the type of the Killer.

Changes and New Listings:

Fernandina & Orlando, Fl., RPO, 213 miles - Oct 15, 1885 to Jul 14, 1890 - page 10

- 380-E-1; FERN & ORLANDO R.P.O., 27, black, 1886, III
- 380-E-2; FERN & ORLANDO R.P.O., 27, black, NYD, III
- 380-G-1; FERNANDINO & TAMPA R.P.O., 27.5, black, 1890,91,96, Misspelled, T.N., II
- 380-G-1a; FERNANDINO & TAMPA R.P.O., 27.5, black, 1901, Misspelled, T.N. on top, II
- 380-G-1b; FERNANDINO & TAMPA R.P.O., 27.5, black, 1891, Misspelled, T.N., II period after Tampa



380-E-1



380-E-2



380-G-1



380-G-1a



380-G-1b

*Lakeland & Fort Meade, Fl., RPO, 24 miles - Feb 23, 1910 to Oct 26, 1911. Note: marking known Lakeland & West Fort Meade, 1910 (Asterisk can be removed)

- 388-L-1; LAKE & W. FT. MEADE R.P.O., 30, black, 1910, T.N., IV
- 388-L-2; LAKE & FORT MEADE R.P.O., 30, black, 1911 with RMS Killer, T.N., V



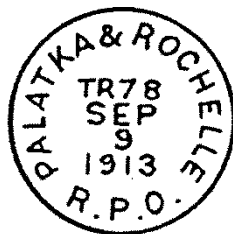
388-L-1



388-L-2

Palatka & Rochelle, Fl., RPO, 39 miles - Apr 18, 1906 to Mar 9, 1917 – Page 14

- 387-F-1; PALATKA & ROCHELLE R.P.O., 29.5, black, 1913, 1914, T.N., II
- 387-F-1a; PALATKA & ROCHELLE R.P.O., 29.5, black, 1906, no T.N., III



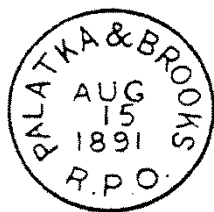
387-F-1



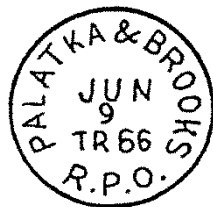
387-F-1a

Palatka & Brooksville, Fl., RPO, 146 miles - Oct 17, 1885 to Jan 4, 1886; Jun 2, 1891 to Jul 26, 1896

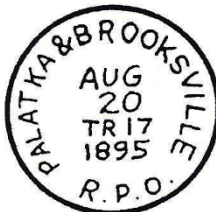
- 387-C-1; PALATKA & BROOKS R.P.O., 27.5, black, 1891,93, III
- 387-C-2; PALATKA & BROOKS R.P.O., 27, black, NYD, T.N., III
- 387-C-2a; PALATKA & BROOKS R.P.O., 27, black, no year date, T.N., III (1893 on back)
- 387-C-2b; PALATKA & BROOKS R.P.O., 27, black, no year date or T.N., III (1894 on back)
- 387-O-1; PALATKA & BROOKSVILLE R.P.O., 27.5, black, 1895, T.N., III



387-C-1



387-C-2



387-O-1



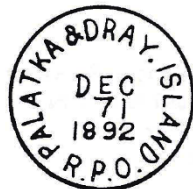
387-C-2a



387-C-2b

Palatka & Drayton Island, Fl., 40 miles, Steamboat, Saint John's River, J.B. Colegrove – contractor, discontinued 3/22/1899

- I-13-a; PALATKA & DRAY. ISLAND R.P.O., 28, black, 1892, V
- I-13-a1; PALATKA & DRAY ISLAND R.P.O., 28, black, 1892, V. (no period after Dray)
- I-13-b; PALATKA & DRAY. ISLAND R.P.O., 27, magenta, 1887, VI



I-13-a



I-13-b



I-13-a1

Macon, Ga. & Palatka, Fl., RPO, 286 miles - Jun 2, 1890 to Dec 28, 1908

- 377-E-1; MACON & PALATKA R.P.O., 27.5, black, 1906, II
- 377-E-2; MACON & PALATKA R.P.O., 26.5, black, 1907, II
- 377-E-2a; MACON & PALATKA R.P.O., 26.5, black, 1894, T.N. on line three, III
- 377-E-3; MACON & PALATKA R.P.O., 29.5, black, 1907 at top. T.N. at bottom, II



377-E-2



377-E-1



377-E-2a



377-E-3

Atlanta, Ga. & Palatka, Fl., RPO, 373 miles - Dec 28, 1908 to Nov 16, 1920

- 377-A-1; ATLANTA & PALATKA R.P.O., 29.5, black, 1910, 11, 12, 17., T.N., II
- 377-A-2; ATLANTA & PALATKA R.P.O., 30.5, black, 1913, 14, T.N., II
- 377-A-2a; ATLANTA & PALATKA R.P.O., 30.5, black, 1916, T.N. at bottom, II
- 377-A-2b; ATLANTA & PALATKA R.P.O., 30.5, black, 1918 year at top, T.N., II
- 377-A-3; ATLANTA & PALATKA R.P.O., 29, black, 1913 on top, T.N. at bottom, II



377-A-1



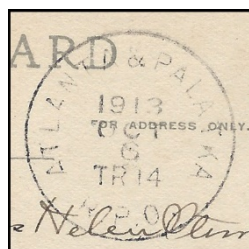
377-A-2



377-A-2a



377-A-2b



377-A-3

Jacksonville & Fort Pierce, Fl., RPO, 242 miles – 1/ 29/ 1894 to 3/ 12/ 1894; 4/ 28/ 1913 to 4/ 24/ 1926

- 392-D-1; JACK. & FORT PIERCE R.P.O., 29.5, black, T.N., 1916,18,21,23, I
- 392-D-1a; JACK. & FORT PIERCE R.P.O., 29.5, black, T.N., NYD with RMS, II [1918]



392-D-1

Jacksonville, Ocala & Tampa, Fl., RPO, 212 miles - Jul 16, 1908 to Apr 12, 1928

- 383-C-1; JACK. OCALA & TAMPA R.P.O., 29.5, black, 1916, T.N., II
- 383-C-1a; JACK. OCALA & TAMPA R.P.O., 29.5, black, 1913, T.N. on bottom, II
- 383-C-1b; JACK. OCALA & TAMPA R.P.O., 29.5, black, 1914, T.N. on bottom, II (no period after Jack)
- 383-C-2; JACK. OCALA & TAMPA R.P.O., 29, black, 1915, T.N., II
- 383-C-2a; JACK. OCALA & TAMPA R.P.O., 29, black, 1911 RMS Killer, T.N. at bottom, II
- 383-G-1; JACKSONVILLE, OCALA & TAMPA R.P.O., 30.5, black, 1927, T.N., II
- 383-G-1a; JACKSONVILLE, OCALA & TAMPA R.P.O., 29.5, black, 1925, T.N. at bottom with RMS Killer, II



383-C-1



383-C-1a



383-C-1b



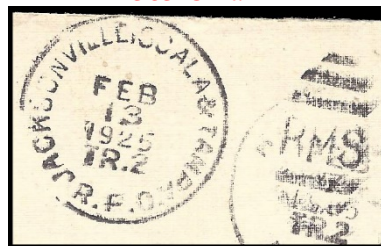
383-C-2



383-C-2a



383-G-1



383-G-1a

Wilmington, N.C. & Jacksonville, Fl., RPO, 499 miles - Sep 1, 1885 to Dec 30, 1892. Note: Southern Division - Charleston S.C. to Jacksonville

- 340-G-1; WIL. & JACK'V. R.P.O., 26.5, black, 1886, 90, Year date or T.N., II
- 340-G-1a; WIL. & JACK'V. R.P.O., Rimless 22, black, 1891, No T.N., IV
- 340-G-2; WIL. & JACK'V. R.P.O., 28, black, 1888, T.N. inverted on line two, II
- 340-G-2a; WIL. & JACK'V. R.P.O., 27, black, 1888, T.N. on Line three, II
- 340-AD-1; WIL. & JACKS. R.P.O., 28.5, black, [1891, 92], T.N., II
- 340-AD-1a; WIL. & JACKS. R.P.O., 28.5, black, 1892, T.N., II



340-G-1



340-G-1a



340-G-2



340-G-2a



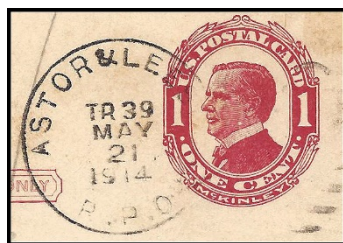
340-AD-1



340-AD-1a

Astor & Leesburg, Fl., RPO, 51 miles - Nov 28, 1884 to Mar 16, 1917

- 387-A-2; ASTOR & LEESBURG R.P.O., 30.5, black, 1907, T.N., II
- 387-A-2a; ASTOR & LEESBURG R.P.O., 30.5, black, 1914, T.N. above date, II
- 387-M-2; ASTOR & LEESBURGH R.P.O., 28.5, black, NDL, 1895, T.N., II
- 387-M-2a; ASTOR & LEESBURGH R.P.O., 28.5, black, 1890, no T.N., II



387-A-2a



387-A-2



387-M-2



387-M-2a

Charleston, S.C. & Jacksonville, Fl., RPO, 287 miles – 1880 to Sep 1, 1885 Dec 30, 1892 to Oct 14, 1908, Aug 1, 1913 to May 23, 1931. (Charleston, S.C. & Jacksonville, FL., Savannah & Charleston R.R.+ Savannah, Florida & Western R.R.)

- 350-I-1; CHARLES. & JACKS. R.P.O., 26.5, black, 1882, I
- 350-I-1a; CHARLES. & JACKS. R.P.O., 27, black, 1881, I
- 350-J-1; CHAS. & JACK. R.P.O. N.L., 26, black, 1883, No T.N., I
- 350-J-1a; CHAS. & JACK. R.P.O. N.L., 26.5, black, 1884, No T.N., III
- 350-P-1; CHARLESTON & JACK. R.P.O., 28.5, black, 1893, T.N., I
- 350-P-1a; CHARLESTON & JACK. R.P.O., 28, black, T.N. NYD, II (1894 on cancel)



350-I-1 350-J-1 350-P-1



350-I-1a 350-J-1a 350-P-1a

Bartow & Punta Gorda, Fl., RPO, 75 miles - Jun 2, 1891 to Jun 5, 1895

- 388-A-1; BARTOW & PUNTA GORDA R.P.O., 29.5, black, 1894, T.N., II
- 388-A-1a; BARTOW & PUNTA GORDA R.P.O., 29, black, 1893, No T.N., II



388-A-1



388-A-1a

Augusta, Ga. & Madison, Fl., RPO, 251 miles - Sep 25, 1934 to Jun 28, 1946

- 349-C-1; AUGUSTA & MADISON. R.P.O., 30.5, black, T.N., 1938 (1934-1946), II
- 349-C-1a; AUGUSTA & MADISON. R.P.O., 30.5, black, T.N., 1938, II, Inverted Date and RMS Killer



349-C-1



349-C-1a

Cuthbert, Ga. & Carrabelle, Fl., RPO, 156 miles - Jun 13, 1904 to Apr 26, 1911 Feb 3, 1921 to Jul 23, 1942

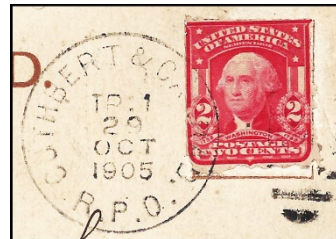
- 391-A-1; CUTHBERT & CARRAB. R.P.O., black, 1928, T.N., I
- 391-A-1a; CUTHBERT & CARRAB. R.P.O., 30.5, black, 1909, T.N., I, Year bottom. RMS Killer
- 391-A-1b; CUTHBERT & CARRAB. R.P.O., 30.5, black, 1928, T.N. on Top, I, RMS Killer



391-A-1



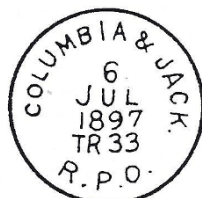
391-A-1a



391-A-1b

Columbia, S.C. & Jacksonville, Fl., RPO, 279 miles - Mar 1, 1895 to Jul 1, 1897 Dec 10, 1899 to May 12, 1900. Note: Operated as Short Run of Charlotte & Jacksonville RPO from Jul 1, 1897 to Dec 10, 1899.

- 328-E-1; COLUMBIA & JACK. R.P.O., 29.5, black, 1897, T.N., III
- 328-E-1a; COLUMBIA & JACK. R.P.O., 28.5, black, 1897, No T.N., III



328-E-1



328-E-1a

Charlotte, N.C. & Jacksonville, Fl., RPO, 388 miles - Jul 1, 1897 to Dec 10, 1899

- 336-R-1; CHARLOTTE & JACK. R.P.O., 28.5, black, 1897, 1899, T.N., III
- 336-R-1a; CHARLOTTE & JACK. R.P.O., 28, black, 1899, T.N. on line three, III. Date line on 2



336-R-1



336-R-1a

Du Pont, Ga. & Port Tampa, Fl., RPO, 278 miles - Dec 8, 1894 to May 2, 1895

- 371-A-1; DU PONT & PT. TAMPA R.P.O., 27.5, black, 1898, III. No T.N. & NYL
- 371-A-1a; DU PONT & PT. TAMPA R.P.O., 27.5, black, 1895, No T.N. line 3, III. Space between U and P of DU PONT
- 371-A-1b; DU PONT & PT. TAMPA R.P.O., 27.5, black, 1895, No T.N. line 4, III. Space between U and P of DU PONT



371-A-1



371-A-1a



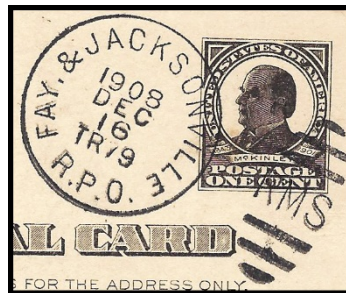
371-A-1b

Fayetteville, N.C. & Jacksonville, Fl., RPO, 449 miles - Oct 14, 1908 to Aug 1, 1913

- 340-O-4; FAY. & JACKSONVILLE R.P.O., 29.5, black, 1909, T.N., II
- 340-O-5; FAY. & JACKSONVILLE R.P.O., 30, black, 1908 on top, T.N. on bottom, with RMS Killer, II



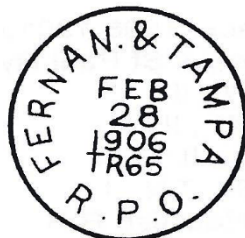
340-O-4



340-O-5

Fernandina & Tampa, Fl., RPO, 241 miles- Aug 15, 1890 to Jul 16, 1908

- 380-H-2; FERNAN. & TAMPA R.P.O., 30, black, 1906, T.N., II
- 380-H-3; FERNAN & TAMPA R.P.O., 29.5, black, 1908, T.N. on line three, with RMS Killer, II



380-H-2



380-H-3

Fort Pierce & Key West, Fl. RPO – Apr 28, 1913 to Apr 21, 1933

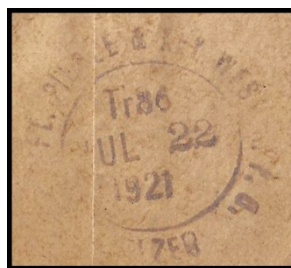
- 392-N-1; FT PIERCE & KEY WEST R.P.O. S.M. BULLOON, D.C. 33x22, violet, 1924, T.N., III
- 392-N-2; FT. PIERCE & KEY WEST R.P.O. C. O. METZER, 30mm Rimless, blue, 1923, T.N., III
- 392-N-2a; FT. PIERCE & KEY WEST R.P.O. C. O. METZER, 30mm Rimless x 20 inside circle, violet, 1921, T.N., III
- 392-N-3; FT. PIERCE & KEY WEST [R.P.O.] R. C. WHITE, Fort Pi[erce] 32, violet, 1924, T.N., III, partial



392-N-1



390-N-2



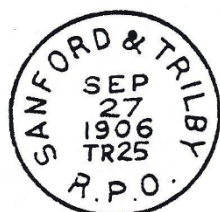
390-N-2a



390-N-3

Sanford & Trilby, Fl., RPO, 77 miles - Feb 13, 1901 to Nov 1, 1949

- 387-K-2; SANFORD & TRIBLY R.P.O., 30, black, 1902, 1906, 1912, T.N., III
- 387-K-2a; SANFORD & TRIBLY R.P.O., 29.5, black, 1938, T.N. at top, III, with RMS Killer



387-K-2



387-K-2a

Waldo & Cedar Keys, Fl., RPO, 71 miles - Feb 14, 1885 to Aug 20, 1902; Feb 14, 1917 to 1932

- 380-K-2; WALDO & CEDAR KEYS R.P.O., 28, black, NYD, III
- 380-K-1; WALDO & CEDAR KEYS R.P.O., 29.5, black, 1923, 1925, T.N., II
- 380-K-3; WALDA & CEDER [KEYS] R.P.[O.], 27.5, black, 1894, No T.N., II, Misspelling
- 380-K-1a; WALDO & CEDAR KEYS R.P.O., 29.5, black, 1917, T.N., II, with RMS Killer



380-K-2



380-K-1



380-K-3



380-K-1a

Waycross, Ga. & Lakeland, Fl., RPO (via Archer), 267 miles - Jan 17, 1900 to Aug 6, 1902;
 Feb 26, 1903 to Aug 21, 1917; Dec 30, 1918 to Sep 1, 1928

- 371-E-1; WAY+ & LAKELAND R.P.O., 29, black, 1900,11,13, T.N., III
- 371-E-1a; WAY+ & LAKELAND R.P.O., 29, black, 1900, T.N. on top, III, Date reversed



371-E-1



371-E-1a

Waycross, Ga. & Port Tampa, Fl., RPO, 312 miles - May 2, 1895 to Jan 17, 1900

- 350-R-1; WAYCROSS & PT. TAMPA R.P.O., 28.5, black, 1897, T.N., III
- 350-R-1a; WAYCROSS & PT. TAMPA R.P.O., 28.5, black, 1896, No T.N. line three, III



350-R-1



350-R-1a

Miami & Key West, Fl., RPO - Jun 22, 1909 to Feb 3, 1912

- 392-K-1; MIAMI & KEY WEST R.P.O., 29.5, black, 1912, T.N., III
- 392-K-1a; MIAMI & KEY WEST R.P.O., 29, black, 1910, T.N. line four, III, with RMS Killer



392-K-1



392-K-1a 392-I-3a

*Sanford & Tampa, Fl., RPO, 116 miles - Feb 13, 1884 to Jan 1, 1885 (Remove Asterisk)

- 384-TA-1; SANFORD & TAMPA R.P.O., 26.5, black, 1884, No T.N., III



384-TA-1

Sanford & Saint Petersburg, Fl., RPO, 154 miles - May 14, 1889 to Dec 30, 1896

- 387-I-1; SANFORD & ST. PETERS. R.P.O., 28.5, black, 1896, 98, w or w/o Y.D., T.N., II
- 387-I-1a; SANFORD & ST PETERS R.P.O., 7, black, 1898, No T.N., IV



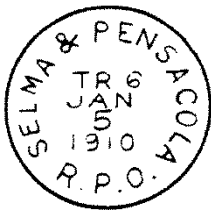
387-I-1



387-I-1a

Selma, Al. & Pensacola, Fl., RPO, 155 miles - Aug 11, 1900 to Sep 30, 1937; Mar 1, 1939 to Mar 1, 1950

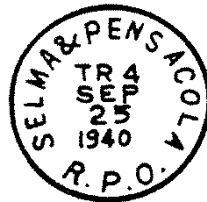
- 407-D-1; SELMA & PENSACOLA R.P.O., 30.5, black, 1910, T.N., II
- 407-D-1a; SELMA & PENSACOLA R.P.O., 29.5, black, 1918, T.N. on bottom, RMS Killer, II
- 407-D-5; SELMA & PENSACOLA R.P.O., 29, black, 1940, T.N., I
- 407-D-5a; SELMA & PENSACOLA R.P.O., 29.5, black, 1933, T.N., I, with RMS Killer



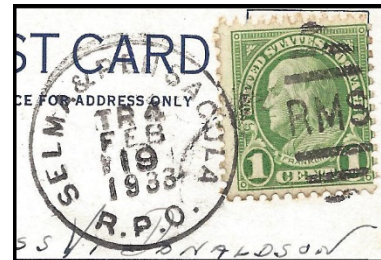
407-D-1



407-D-1a



407-D-5



407-D-5a

High Springs & Saint Petersburg, Fl., RPO, 182 miles - Dec 30, 1896 to May 21, 1899

- 393-J-1; HGH. SPR. & ST. PETERSBURG R.P.O., 27.5, black, 1898,99, T.N., III
- 393-J-1a; HGH. SPR. & ST. PETERSBURG R.P.O., 27.5, black, 1899, T.N. on line three, III



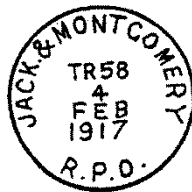
393-J-1



393-J-1a

Jacksonville, Fl. & Montgomery, Al., RPO, 390 miles - Aug 5, 1907 to Jul 7, 1934

- 351-G-2; JACK. & MONTGOMERY R.P.O., 29.5, black, 1917, T.N., III
- 351-G-2a; JACK. & MONTGOMERY R.P.O., 29.5, black, 1930 at top, T.N. at bottom, III
- 351-G-4; JACK & MONTGOMERY R.P.O., 30, black, 1909, 1913, T.N., III



351-G-2



351-G-2a

Du Pont, Ga. & Gainesville, Fl., RPO, 120 miles – 9/1/1884 to 12/8/1894; 4/15/1895 to 5/2/1895

- 371-F-1; DU PONT & GAINESVILLE R.P.O., 28.5, black, 1893, T.N., IV. NYL
- 371-F-1a; DU PONT & GAINESVILLE R.P.O., 28.5, black, 1894, T.N. line three, IV.



371-F-1



371-F-1a

Jacksonville & Cedar Keys, Fl., RPO - 126 miles, Aug 20, 1902 to Feb 14, 1917

- 380-N-1; JACK. & CEDAR KEYS R.P.O., 29.5, black, T.N., 1908, 1911 with RMS Killer, II
- 380-N-1a; JACK. & CEDAR KEYS R.P.O., 29.5, black, 1908 on line 2, T.N., RMS Killer, II



380-N-1



380-N-1a

Jacksonville & Pensacola, Fl., RPO, 369 miles - Eastern Division - Jacksonville to River Junction, 208 miles - May 25, 1883 to Oct 17, 1966; Western Division - River Junction to Pensacola, 161 miles - May 25, 1883 to Feb 9, 1957

- 381-G-2; JACK. & PENS. R.P.O., 28.5, black, 1905, 1906 with RMS Killer, T.N., II
- 381-P-1; JACKS. & PENZA. R.P.O. E.D., 28, black, NYD, III (1885 from docket mark)
- 381-O-6; JACK. & PENZA, W.D. R P.O., 29.5, black, 1932, 1931 with RMS Killer, T.N., I
- 381-J-1; JACK. & PENS. EAST R.P.O., 29.5, black, 1930,44, T.N., I
- 381-J-1a; JACK. & PENS. EAST R.P.O., 29, black, 1941 with RMS Killer, T.N., I



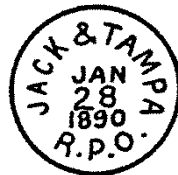
381-J-1



381-J-1a

Jacksonville & Tampa, Fl., RPO, 239 miles - Jan 1, 1885 to Sep 29, 1890; Jun 1, 1895 to Aug 8, 1898 Nov 1, 1916 to Sep 17, 1966. Note: boat used Palatka to Sanford - Jan 1, 1885 to Apr 16, 1886

- 384-A-2; JACK & TAMPA R.P.O., 27.5, black, 1890, II
- 384-A-2a; JACK & TAMPA R.P.O., 27.5, black, NYD, II



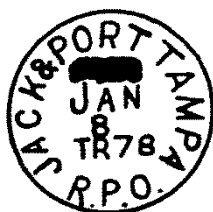
384-A-2



384-A-2a

Jacksonville & Port Tampa, Fl., RPO, 250 miles – 9/29/1890 to 6/1/1895; 8/8/1898 to 11/1/1916

- 384-B-1; JACK & PORT TAMPA R.P.O., 27, black, 1890's, T.N., II. (NYD)
- 384-B-1a; JACK & PORT TAMPA R.P.O., 27, black, Time, NYD, T.N., II
- 384-B-1b; JACK & PORT TAMPA R.P.O., 27, black, Time, 1897, T.N., II
- 384-C-5; JACK & (PT). TAMPA R.P.O., 28, black, 1905, Partial, T.N. at bottom, II
- 384-C-5a; JACK & PT. TAMPA R.P.O., 28, black, 1902, T.N. at top, with RMS Killer, II.



384-B-1



384-B-1a



384-B-1b



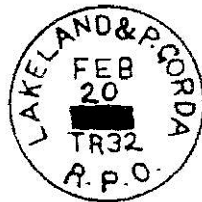
384-C-5



384-C-5a

Lakeland & Punta Gorda, Fl., RPO, 86 miles - Jun 5, 1895 to Aug 4, 1904

- 388-D-1; LAKELAND & P. GORDA R.P.O., 26.5, black, T.N., 1890's (1895-1904), II
- 388-D-1a; LAKELAND & P. GORDA R.P.O., 26.5, black, T.N., 1898, II



388-D-1



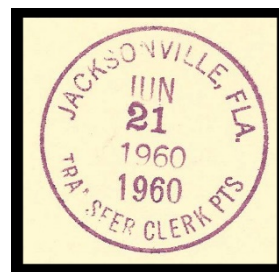
388-D-1a

Jacksonville, Fl. – Transfer Clerk (See discussion in Florida Route Agents Postmarks under Miscellaneous Florida Railroad Markings)

- 389-D-8; JACKSONVILLE, FLA. TRANSFER CLERK PTS, 30.5, magenta, 1960,64., I
- 389-D-8a; JACKSONVILLE, FLA. TRANSFER CLERK PTS, 30.5, magenta, Double 1960, I



389-D-8



389-D-8a

Jacksonville & Eau Gallie, Fl., RPO, 190 miles - Sep 1, 1893 to Dec 4, 1893

- 392-C-2; JACK & EAU GALLIE R.P.O., 28, black, T.N., 1893, III
- 392-C-2a; JACK & EAU GALLIE R.P.O., 28, black, 1893 line three, T.N. line four, III



392-C-2



392-C-2a

Jacksonville & Key West, Fl., RPO, 522 miles - Feb 3, 1912 to Apr 28, 1913; Apr 24, 1926 to Oct 1, 1944. Note: Northern Division - Jacksonville to Fort Pierce (242 miles); Southern Division - Fort Pierce to Key West (280 miles) via the Florida East Coast Ry.

- 392-E-4; JACK. & KEY WEST. R.P.O., 30, black, 1935 with RMS Killer, 1937, T.N., II
- 392-H-2; JACK. & KEY WEST R.P.O. S.D., 29, black, 1912, 13, 28 with RMS Killer, T.N., III
- 392-H-2a; JACK. & KEY WEST R.P.O. S.D., 29, black, 1913 on bottom, T.N. on top, II
- 392-R-1; JACK & KEY WEST TR. 184, 4-line handstamp, purple, 1912, Clerks name, T.N., III
- 392-R-1a; JACK & KEY WEST TR. 184, 4-line handstamp, purple, 1913, Clerks name, T.N., III
- 392-R-1b; JACK & KEY WEST, 3-line handstamp, purple, 1891, Clerks name, III

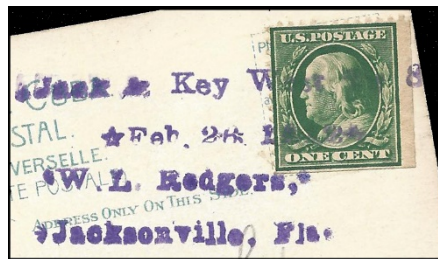


392-H-2



392-H-2a

Jack & Key West Tr. 184
 ★ March 9, 1912 ★
 L. Rodgers. ♦
 Jacksonville, Fla
 392-R-1



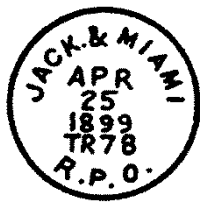
392-R-1a



392-R-1b

Jacksonville & Miami. Fl., RPO, 366 miles - Jul 1, 1896 to Feb 3, 1912; Oct 1, 1944 to Jan 22, 1963

- 392-I-3; JACK. & MIAMI R.P.O., 29, black, 1898,99, T.N., III
- 392-I-3a; JACK. & MIAMI R.P.O., 29, black, 1896 line four, T.N. line three, III
- 392-M-3; JACKSONV. & MIAMI R.P.O., 30.5, black, 1908, T.N., II
- 392-M-3a; JACKSONV. & MIAMI R.P.O., 30.5, black, 1912, No T.N., with RMS Killer, II



392-I-3



392-M-3



392-I-3a



392-M-3a

Montgomery, Al. & Graceville, Fl., RPO, 159 miles - Feb 2, 1903 to Jul 13, 1932

- 417.1-D-1; MONT. & GRACEVILLE R.P.O., 29.5, black, 1903, 11, 22, 28, T.N., III
- 417.1-D-1a; MONT. & GRACEVILLE R.P.O., 29.5, black, 1909 line three, T.N. line four, RMS Killer, I



417.1-D-1



417.1-D-1a

Lakeland Transfer Clerk

- 388-TC-1; LAKELAND, FLA TRANS. CLK., 29.5, black, 1907, time, V



388-TC-1

Date and RMS Killer Changes:

New Smyrna & Lake Harbor, Fl., RPO, 194 miles - Sep 25, 1934 to Sep 2, 1937

- 395.2-B-1; NEW SMYRNA & LAKE HARBOR R.P.O., 30, black, 1934, 1935 with RMS Killer, 38, 39, T.N., I

Jacksonville & Saint Petersburg, Fl., RPO, 274 miles - May 21, 1899 to Sep 17, 1966

- 393-E-2; JACK. & ST. PETERSB'G. R.P.O., 29, black, 1920, 1926, T.N., II
- 393-H-6; JACK & ST. PETE. R.P.O., 30, black, 194-, 1940 with RMS Killer, T.N., I

Key West, Fl. & Havana, Cuba, 90 miles, Peninsular & Occidental Steamship Co.

- I-26-a; KEY WEST & HAVANA R.P.O., 29.5, black, 1914, 1915 with RMS Killer, Direction, III
- I-26-b; KEY WEST & HAVANA R.P.O., 30, black, 1915, 1916, 1917 with RMS Killer Direction, III

Lakeland & Fort Myers, Fl., RPO, 115 miles - Aug 4, 1904 to Apr 10, 1928; Nov 7, 1947 to Sep 30, 1965

- 388-C-1; LAKE & FT. MYERS R.P.O., 30.5, black, T.N., 1949, 51, 1960 with RMS Killer, I

Hamlet, N.C. & Jacksonville, Fl., RPO, 386 miles - May 12, 1900 to Sep 8, 1968

- 328-H-6; HAMLET & JACK. R.P.O., 30, black, 1930, 1934 with RMS Killer, T.N., I

¹ Kay, John L. and Fred MacDonald with data compiled by Charles L. Towle., 197?, *Mail travel guide, an updated agent and RPO routes listed by state and railroad with route numbers, directions and maps*, Mobile Post Office Society. One volume (loose leaf) with maps.

1. Kay John L. 2000, *Directory of Route Agent Lines – Revised Edition -2000*. Mobile Post Office Society, Holmdel, N.J.
2. Remele, C. W. 1958. *United States Railroad Postmarks, 1837-1861*. 169 p. Illus. + maps.
3. Towle, Charles L. 1975. *The United States Transit Markings Catalog, 1837 to 1974*. v.1.1837-1886, v.2-3.1887-1974, v.4 1996 edition, by Fred MacDonald including work originally begun by Charles L. Towle. Mobile Post Office Society. Later published as Towle, Charles L, & MacDonald, Fred. *The United States Railway Post Office Postmark Catalog 1864-1977*. Revised 2001. LL. 1001 p. Shows & classifies markings/killer types. Lists marking, RR name, routes, mileage, rarity factor. Volumes 1 to 3 catalog R.P.O. markings and Volume 4 catalogs Transfer Clerk and Transfer Office markings.
4. Towle, Charles L. 1986. *U. S. Route and Station Agent Postmarks + Historical Supplement*. Mobile Post Office Society, Tucson AZ. HB. 422 p. History of RR & Waterway mail with most postmarks illustrated and rarity value. Index by state, RR & body of water. Two volumes. Supp. 124 p. RR name, date established, construction start/end, mileage, later systems + thirty-one 1883 state maps to locate RR lines.
5. Towle, Charles L. & Kay, John L. 1987. *Waterway Railway Post Offices of The United States*. 32 p. Shows markings. Route designation, terminal, distance, operator, cancels used, value guide.
6. http://chazzcreations.com/florida_rail_system. This website is a comprehensive overview of the Florida Railroad system with pictures, postcards, timetables, maps. The section on Florida Railway Systems discusses 15 different Railways.